

## HIGH FREQUENCY SOLAR INVERTER PV1800 PRO Series

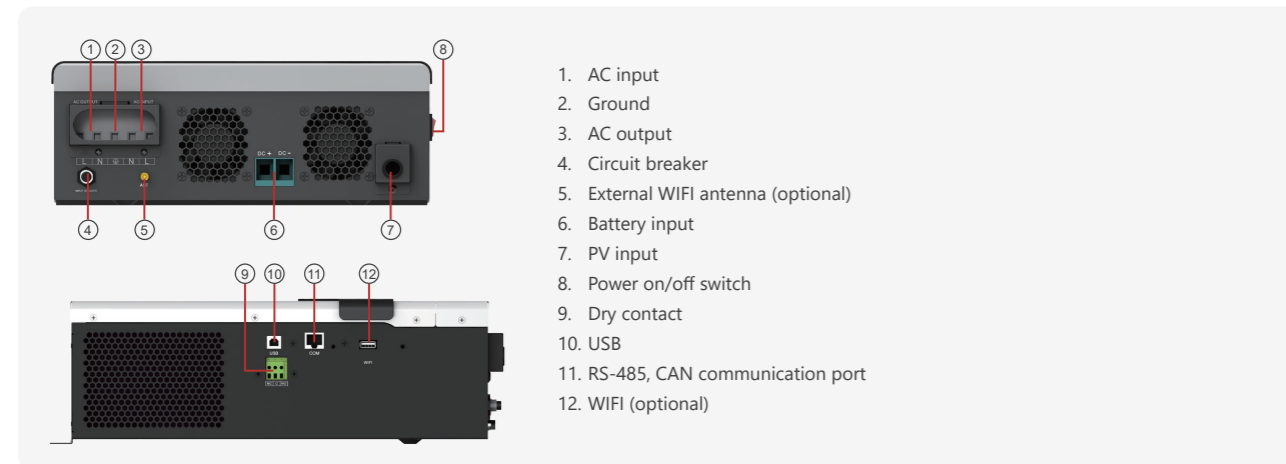
2~3.2KW | 400V | WiFi

PV1800 PRO is a multi-function inverter/charger, combining functions of inverter, MPPT solar charger and battery charger to offer uninterruptible power support in portable size. PV1800 PRO Series can run without battery. The Maximum PV array open circuit voltage can reach 400V and MPPT voltage is 60~320Vdc, which Can help customers make full use of solar energy.

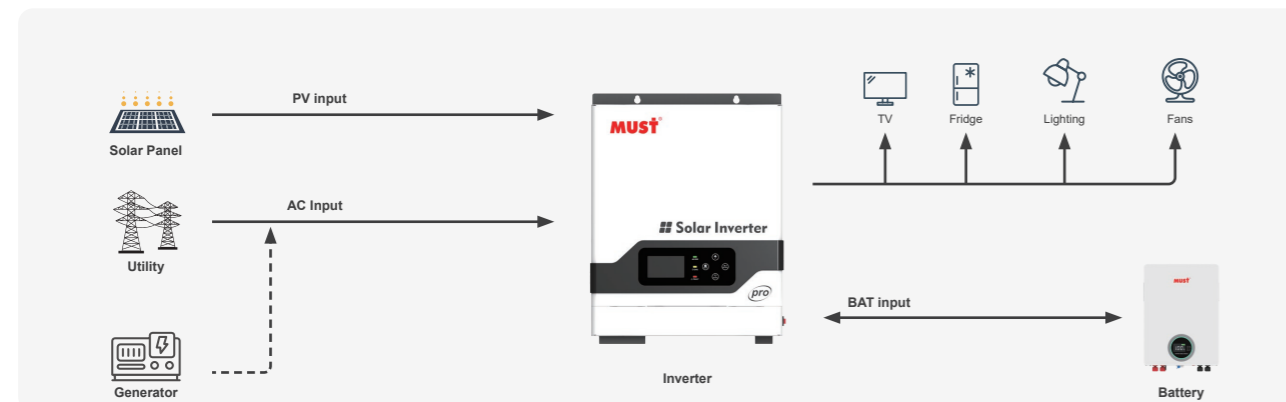


- Pure sine wave output
- Smart LCD setting (Working modes, Charge Current, Charge Voltage, etc).
- Built-in MPPT solar charge controller
- MAX PV Array Open Circuit Voltage: 400V
- Combining solar system, AC utility, and battery power source to supply continuous power
- Overload, short circuit and Deep discharge protection
- Cold start function
- Support USB, RS485 monitoring function
- WIFI remote monitoring (Built in wifi module and antenna)
- PV/ AC activation function
- BMS communication function

### Back panel description



### Solar system connection



MODEL	PV18-2024 PRO	PV18-3224 PRO
Nominal Battery System Voltage	24VDC	
<b>INVERTER OUTPUT</b>		
Rated Power	2000VA / 2000W	3200VA / 3200W
Surge Power	4000W	6400W
Waveform	Pure sine wave	
AC Voltage Regulation (Batt.Mode)	230VAC±5%(Setting)	
Inverter Efficiency(Peak)	90%	
Transfer Time	10ms (UPS / VDE4105) / 20ms (APL)	
<b>AC INPUT</b>		
Voltage	230VAC±5%	
Selectable Voltage Range	170~280VAC(UPS) / 90~280VAC(APL) / 184~253VAC(VED4105)	
Frequency Range	50Hz / 60Hz(Auto sensing)	
<b>BATTERY</b>		
Normal voltage	24VDC	
Floating Charge Voltage	27.4VDC	
Overcharge Protection	30VDC	
<b>SOLAR CHARGER &amp; AC CHARGER</b>		
Maximum PV Array Open Circuit Voltage	400VDC	
Maximum PV input current	18A	
Charging Algorithm	3-Step (Flooded Battery, AGM / GEL / LEAD Battery), 4-Step (Li)	
Maximum PV Array Power	3000W	4000W
PV Array MPPT Voltage Range	60~320 VDC	
Maximum Solar Charge Current	80A	100A
Maximum AC Charge Current	40A	60A
Maximum Charge Current	80A	100A
<b>MECHANICAL SPECIFICATIONS</b>		
Machine Dimension (W*H*D)(mm)	290*367*111	
Package Dimension (W*H*D)(mm)	/	
N.W (kg)	/	
G.W (kg)	/	
<b>OTHER</b>		
Humidity	5% to 95% Relative humidity (Non-condensing)	
Operating Temperature	0°C~50°C	
Storage Temperature	-15°C~60°C	
Warranty	2 year	
<b>MECHANICAL SPECIFICATIONS</b>		
CE-EMC+LVD (EN6100-6-3:2007, EN6100-6-1:2017+EN IEC62109-1:2010, EN IEC62109-2:2011)		

\*The technical specifications of this document are subject to change without any notice